

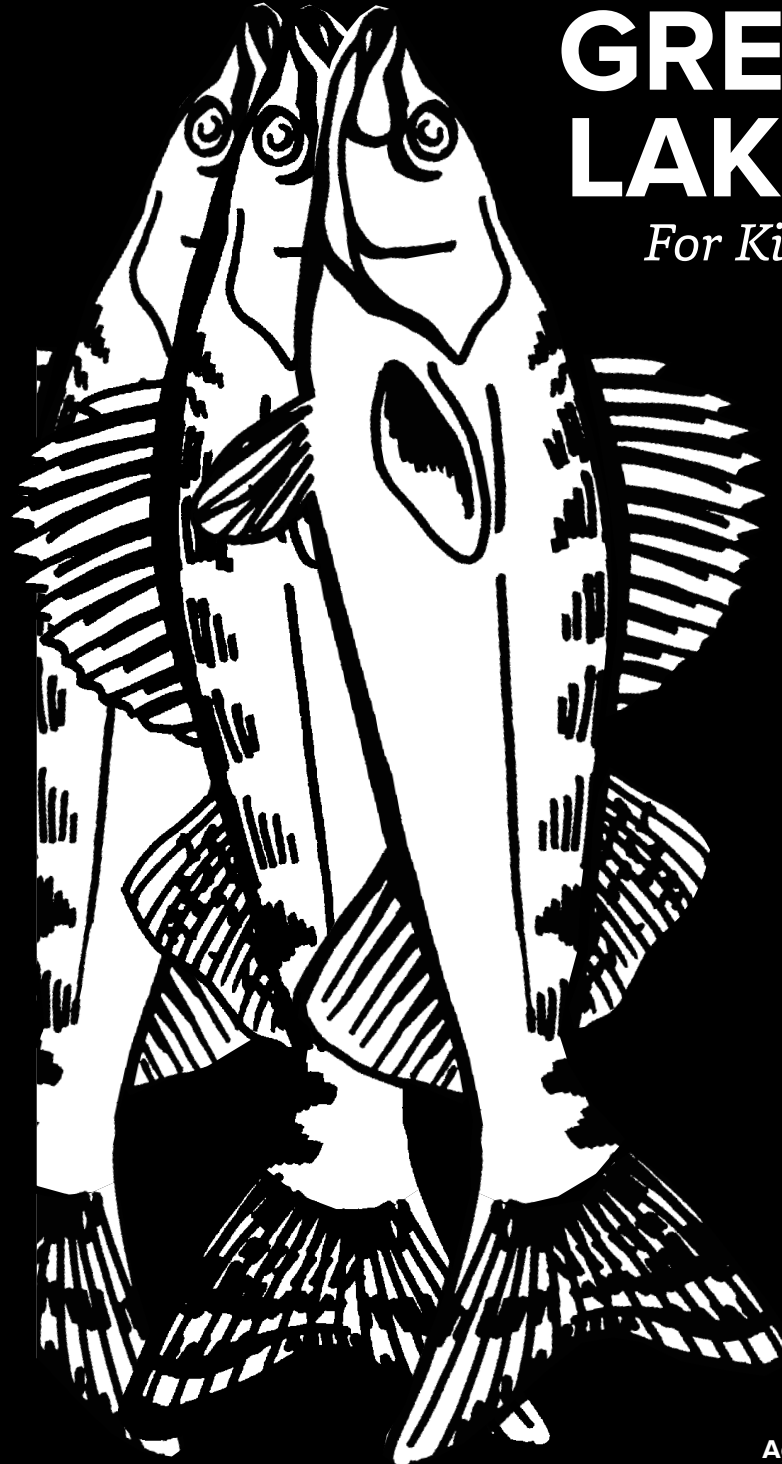
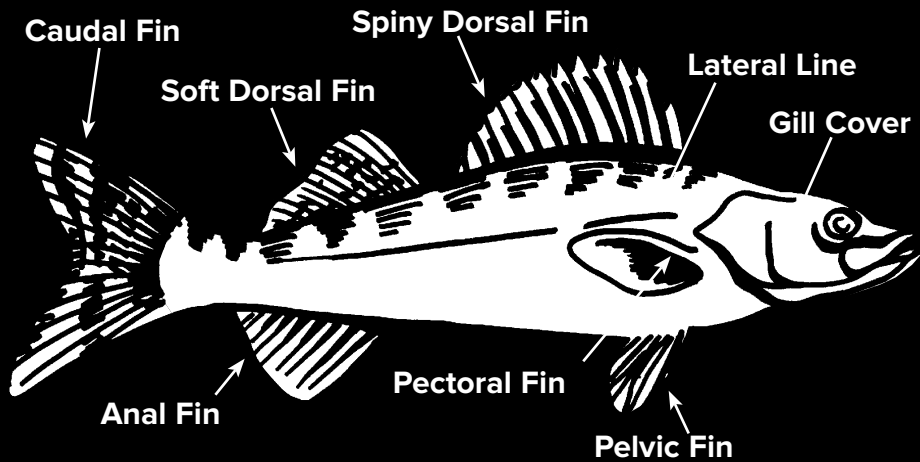


**T**ake the first letter found in each of the Great Lakes, **fill it in** the appropriate space to the left, and **form a word** to help you remember the names of all five Great Lakes.

# GREAT LAKES

*For Kids*

## Anatomy of a Fish



For additional copies or a complete list of publications, call or write Ohio Sea Grant College Program, 1314 Kinnear Rd., Columbus, OH 43212 614-292-8949, or visit our website at [ohioseagrant.osu.edu](http://ohioseagrant.osu.edu)



OHSU-EP-1516  
08/16

Ages 8 and up

# Fun Facts

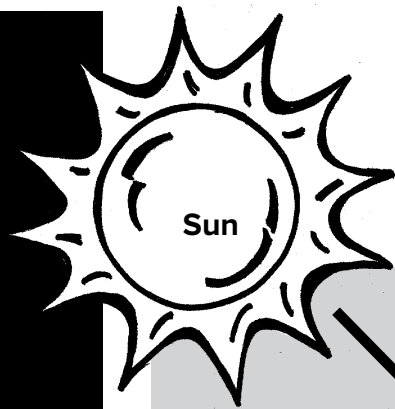
A chain is made of connected parts called links. The terms "food chain" and "food web" describe the paths of energy flow between plants and animals in a natural community.

A **food chain** is a simple diagram of who eats what. Each plant and animal stands for a link of energy in a food chain. Several food chains connected together make up a **food web**.

The sun is the first source of energy. Green plants use the sun's energy and nutrients in the soil to make their own food through a process called photosynthesis. Because green plants make their own food, they are called **producers**.

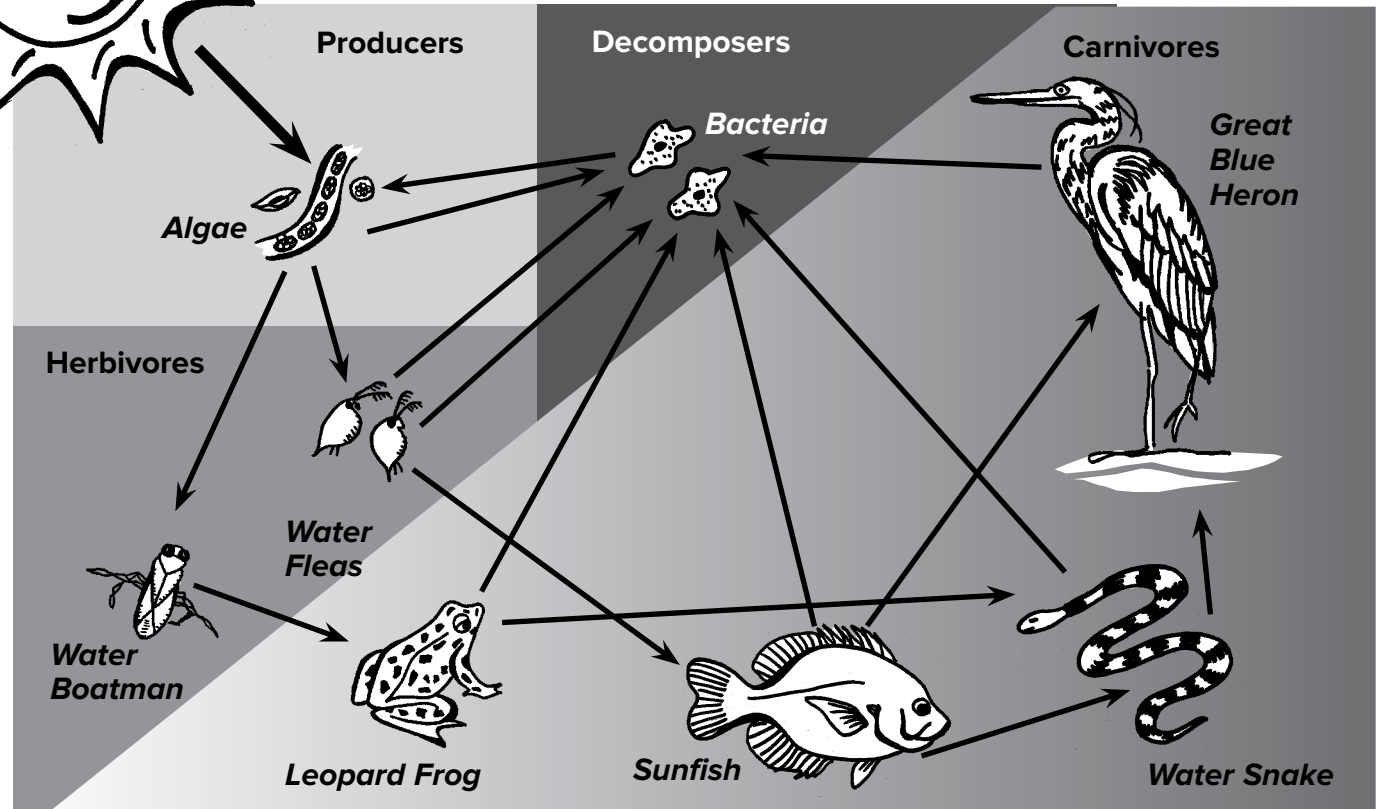
All other living things in a food chain are called **consumers** because they cannot make their own food. Consumers that eat plants to get their energy are called **herbivores**. Consumers that eat other consumers to get their energy are called **carnivores** (meat-eaters).

**Decomposers**, usually bacteria or fungi, are a special group of consumers. They break down dead plants and animals, returning nutrients to the soil, where they can be used by green plants.



# The Circle of Lake Life

This diagram illustrates a basic food web in the Great Lakes. The arrows show the path of food (energy) through the web.



**F**ollow the arrows in the web to complete the missing parts of the food chains below.

For example:

Sun	→	Algae	→	Water Boatman	→	Leopard Frog
Sun	→		→	Water Fleas	→	
	→	Water Snake	→	Great Blue Heron	→	
Sunfish	→		→		→	Algae
	→	Leopard Frog	→	Water Snake	→	